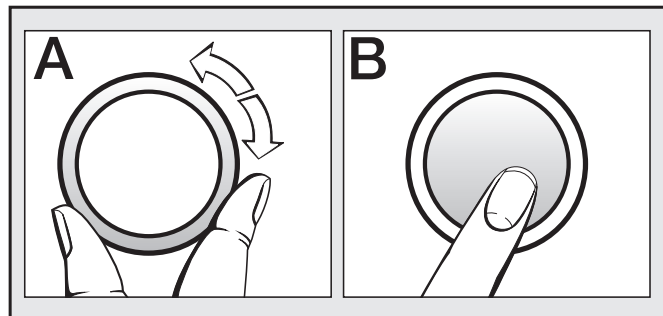


⚠ Please read the instruction manual before installing and using this machine and observe all warning and safety instructions.

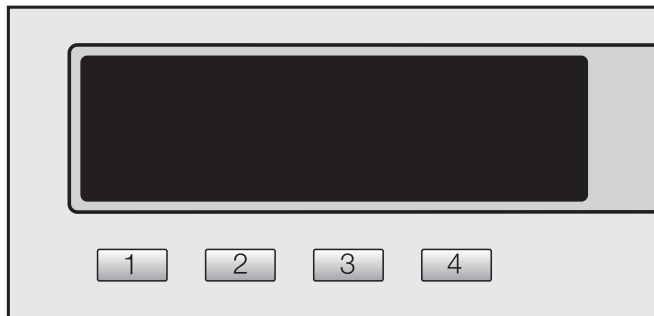
Multi-function selector and display



Multi-function selector

Turning the multi-function selector moves the highlighting to the next option.

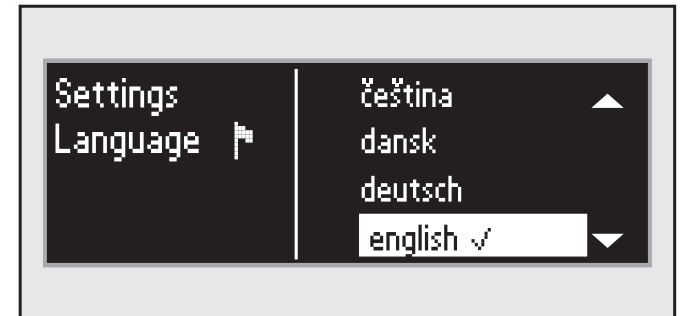
Pressing the multi-function selector selects the highlighted option.



Short cut buttons

The 4 programmes shown on the left of the display can be selected by pressing the **1** **2** **3** or **4** buttons. The short cut buttons have different functions in the other menus.

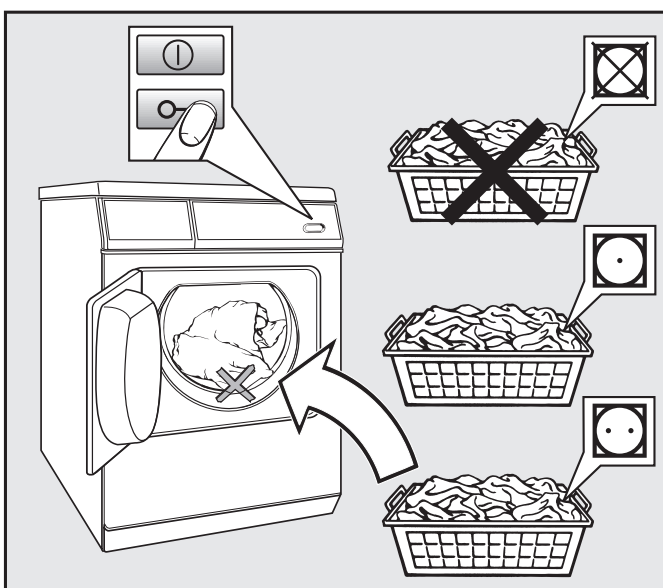
Select the language



The flag acts as a guide to prevent a language which will not be understood being set.

- Select and confirm the language you want.

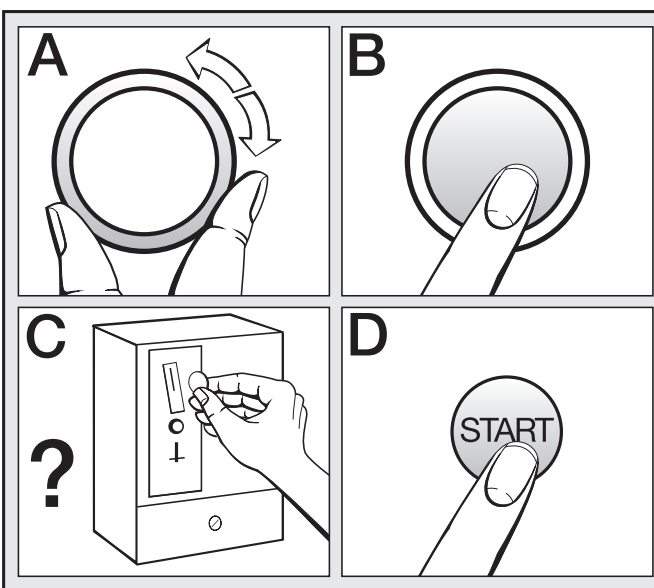
1 Sort the laundry and load the machine



- Sort according to laundry care symbols:
 - ☒ Do not dry.
 - ☉ Select *Low temperature*
 - ☉ Dry at normal temp.
- Shut the door with a gentle swing.

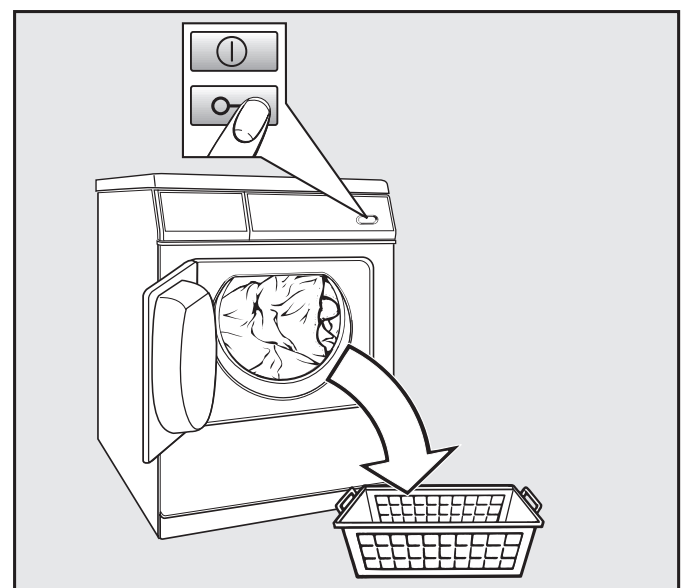
Make sure items do not get caught in the door opening.

2 Select and start the programme



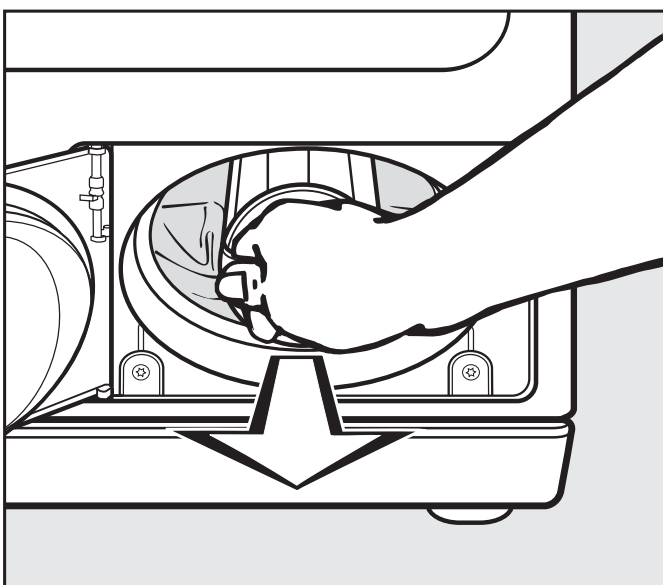
- Switch on using the button.
- **A+B** Turn and press.
- **C** If the machine has a payment system, insert payment.
- **D** Start the programme

3 Unload the drum

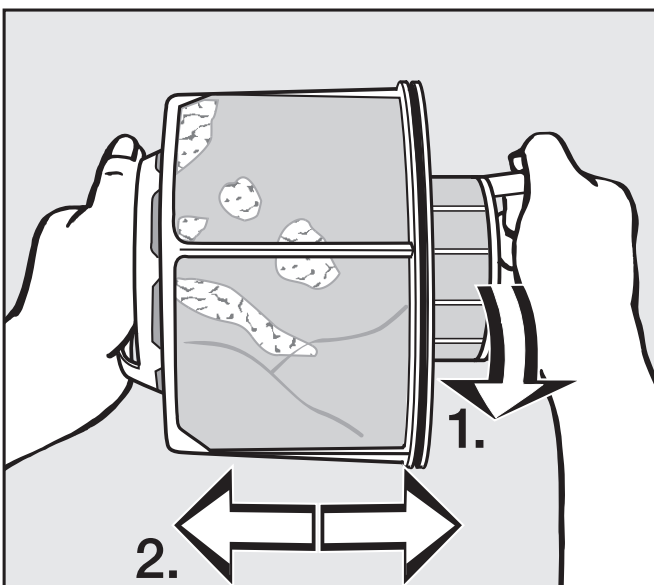


- *Finish* will appear in the display.
 - Open the door and remove the laundry.
- The dryer will switch off automatically (except when coin-operated).

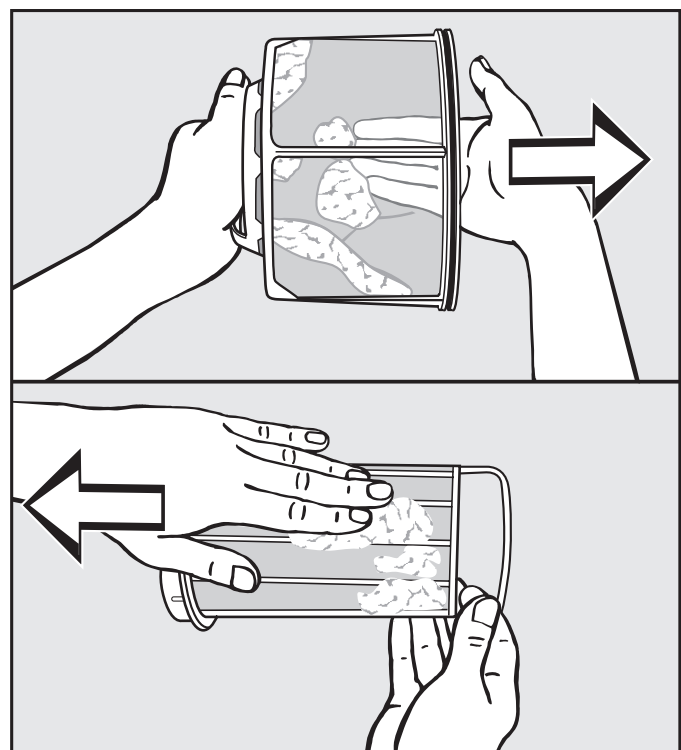
Cleaning (only clean when the *Clean out airways* message comes up in the display.)



- Confirm the reminder with *OK*.
- Open the access panel and pull the fluff filter out by the handle.



- Pull the two sections of the filter apart as shown.



- Shake out the fluff, or use your fingers or a vacuum cleaner to remove.
- Reassemble the filter and push it back into its housing.
- Close the access panel.

Basic programmes	Fabric type/Items	Notes	Load
Cottons			
Extra dry, Normal+, Normal, Hand iron Δ , Hand iron $\Delta\Delta$, Machine iron	<ul style="list-style-type: none"> – Single and multi-layered cotton fabrics: – Towelling, T-shirts, underwear, flannelette bed linen and baby clothes. – Workwear, jackets, cotton blankets, aprons, face flannels, tea towels, bed linen, towels, table linen. 	<ul style="list-style-type: none"> – Laundry care symbol \square: Select <i>Low temperature</i>. – Select <i>Extra dry</i> for multi-layered and very thick fabrics. – Do not use <i>Extra dry</i> for items such as T-shirts, underwear or baby clothes, as this may cause them to shrink. – To prevent laundry from drying out, it should be rolled up until you are ready for ironing. 	Max. 6.5 kg*
Minimum iron			
Normal+, Normal, Hand iron Δ	<ul style="list-style-type: none"> – Minimum iron cotton, synthetic and mixed fibre fabric. – Workwear, overalls, pullovers, dresses, trousers, table linen 	Laundry care symbol \square : Select <i>Low temperature</i> .	Max. 3.5 kg*
Woollens handcare			
Woollen garments.		Hang items in the open air to complete the drying process.	Max. 2.5 kg*
Smoothing			
<ul style="list-style-type: none"> – Cotton and linen fabric. – Minimum iron mixed fibre, cotton or synthetic fabrics, trousers, anoraks, shirts. 		Hang items in the open air to complete the drying process.	Max. 3.0 kg*
Cool air			
Any item which only needs airing.			Max. 6.5 kg*
Warm air			
<ul style="list-style-type: none"> – For finishing the drying process in multi-layered fabrics whose layers have different drying characteristics, or for drying single items. – Single items such as jackets, cushions and padded items. 		Laundry care symbol \square : Select <i>Low temperature</i> .	Max. 6.5 kg*
Denim			
Normal, Hand iron Δ	Denim garments, e.g. jeans, jackets, skirts, shirts.		Max. 3.5 kg*
Shirts			
Normal, Hand iron Δ	Shirts and blouses.		Max. 2.5 kg*
Outerwear			
Normal, Hand iron Δ	Outerwear which is suitable for drying in a tumble dryer.		max. 3.5 kg*
Proofing			
Microfibre fabrics, skiwear, fine, closeweave cotton garments (poplin) or tablecloths which are suitable for drying in a tumble dryer.		Fire hazard. Do not dry items which have been treated with proofing agents containing paraffin.	Max. 2.5 kg*
Delicates			
Normal+, Normal, Hand iron Δ	<ul style="list-style-type: none"> – Delicate cotton, synthetic and mixed fibre fabrics. – Thin pullovers, dresses, trousers, overalls, table cloths, shirts, blouses. – Lingerie and appliquéd fabrics. 		Max. 4.0 kg*
Towelling			
<ul style="list-style-type: none"> – Large quantities of single-layer and multi-layer towelling items. – Towels, dressing gowns, face flannels, towelling bedding. 			Max. 6.5 kg*
Silks handcare			
Silks, e.g. blouses and shirts.		Hang items in the open air to complete the drying process.	Max. 1.5 kg*
Reactivate			
Outerwear which is suitable for drying in a tumble dryer.			Max. 2.5 kg*
Standard pillows			
Feather or down pillows. (2 pillows up to max. 80 x 80 cm)			Max. 2.5 kg*
Basket Std. temp., Basket Low temp.			
<ul style="list-style-type: none"> – The drying basket must be in place when using this programme. – It is essential to observe the operating instructions for the drying basket. 		<ul style="list-style-type: none"> – For thermally sensitive textiles/items, select <i>Basket Low temp</i>. 	Max. 3.0 kg*

* Weight of dry items

