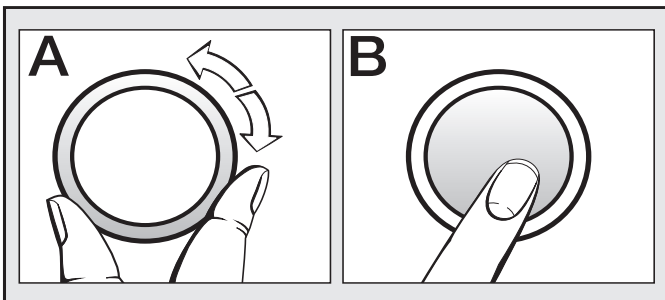


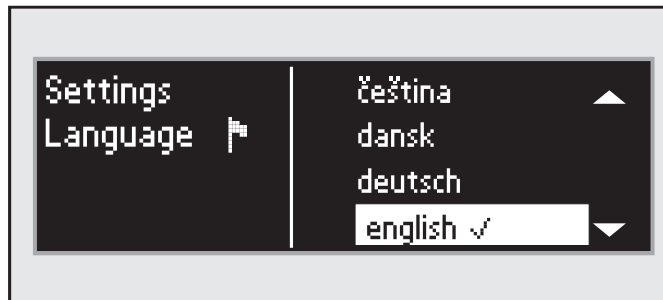
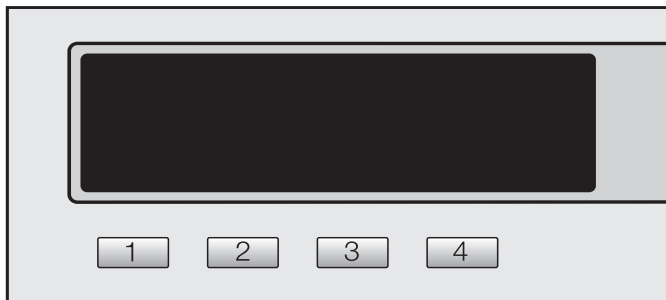
**Multi-function selector and display**



**Multi-function selector**

Turn the multi-function selector to highlight the next option.  
 Press the multi-function selector to select the highlighted option.

**Select the language**



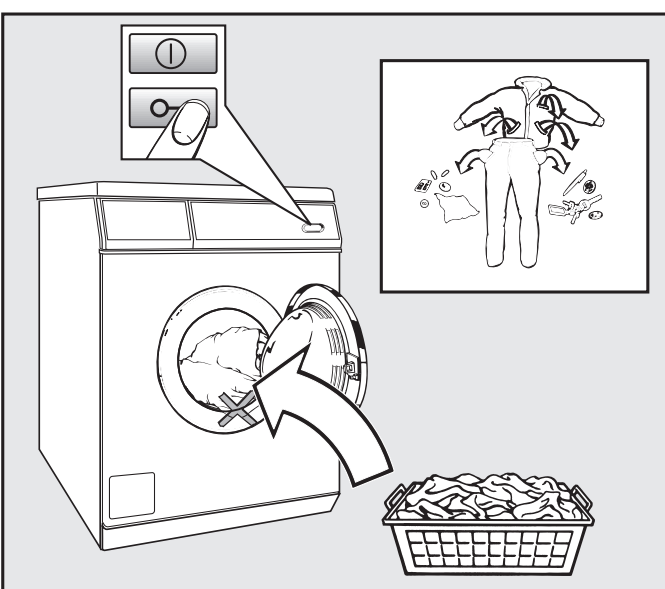
**Short cut buttons**

Press the **1** **2** **3** or **4** button to select one of the 4 programmes (on the left of the display). The short cut buttons have different functions in the other menus.

The flag acts as a guide to prevent a language which will not be understood being set.

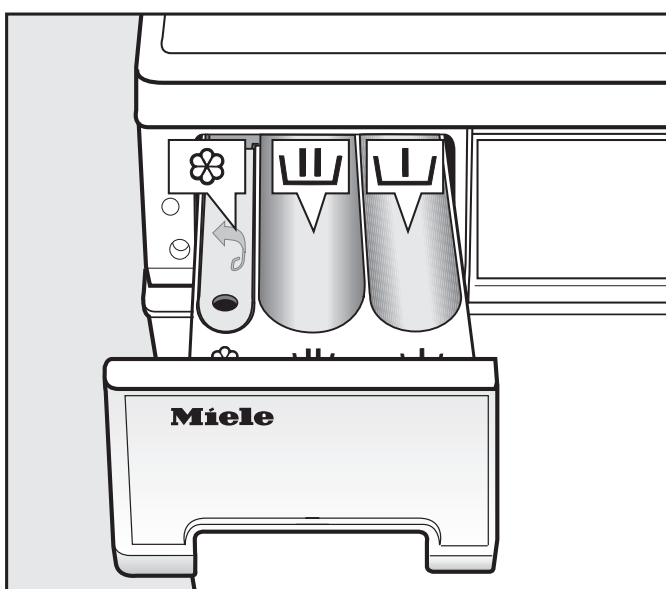
- Select and confirm the language you want.

**1 Load the drum**



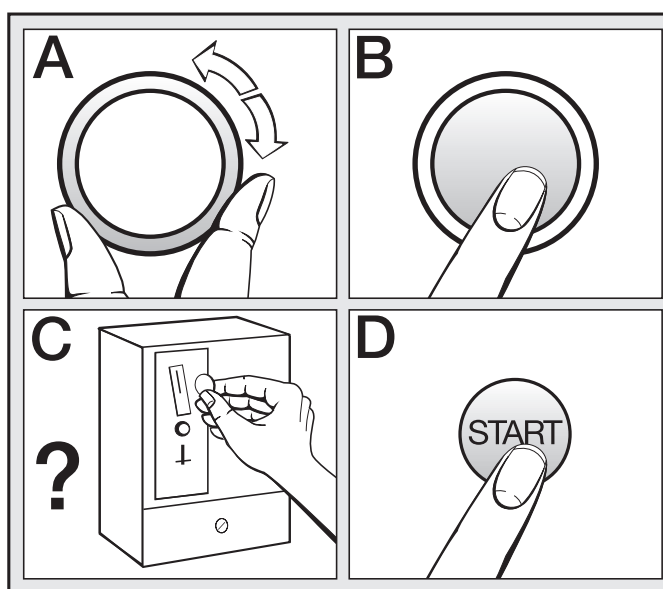
- Switch the washer extractor on ① and open the door .
- Load the laundry (check the symbol on the care label).
- Shut the door with a gentle swing. Make sure items do not get caught in the door opening.

**2 Add detergent**



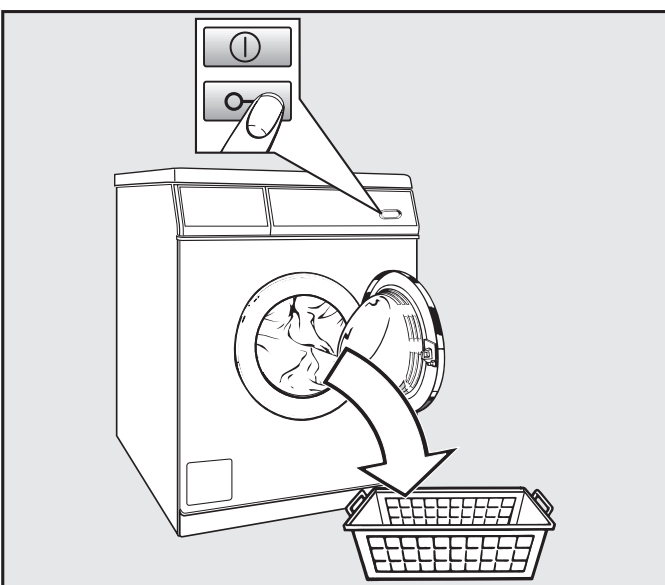
- = Detergent for pre-wash
- = Detergent for the main wash
- = Fabric conditioner or liquid starch

**3 Select and start the programme**



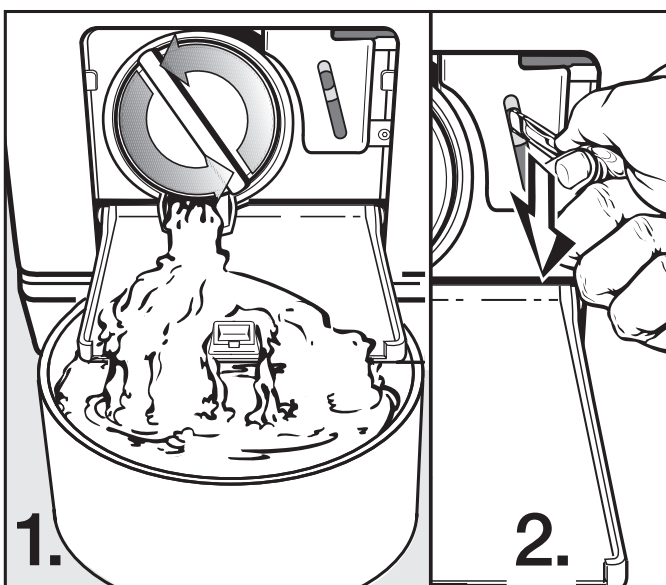
- Select a programme and confirm your selection (A + B).
- If the machine has a payment system, insert payment (C).
- Press the *START* button (D).

**4 Remove the laundry**



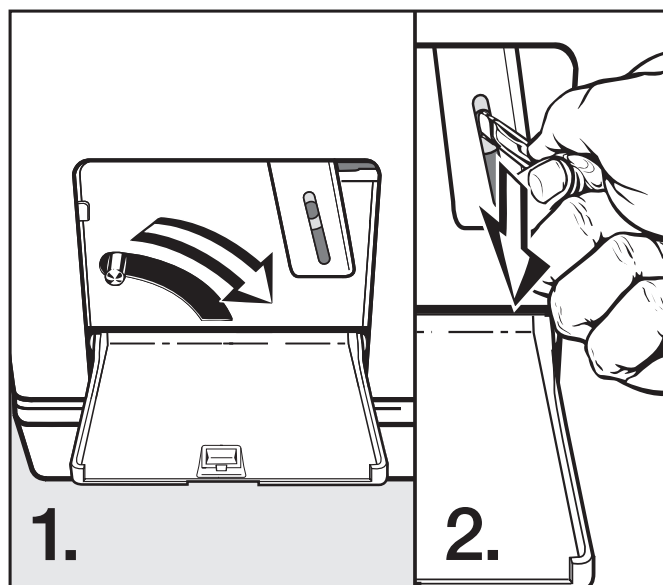
- Finish will appear in the display.
- Open the door and remove the laundry.

**To open the door during a power cut ... on machines with a drain pump**



- Open the drain filter access flap.
- Drain the water into a suitable large container. Be careful - the water may be very hot.
- Open the door using a spoon handle or similar.

**To open the door during a power cut ... on machines with a dump valve**



- Open the drain filter access flap.
- Drain the machine.
- Open the door using a spoon handle or similar.



Basic programmes		Max. load: PW 6055 Vario / PW 6065 Vario
<b>Cottons Hygiene 70°C to 95°C</b>  		Max. 5.5 kg / 6.5 kg
Fabric	Cotton, linen or cotton mix fabrics, e.g. bed linen, baby clothing, underwear.	
Detergent	Universal detergent	
<b>Cottons Uni. cold to 60°C</b>   		Max. 5.5 kg / 6.5 kg
Fabric	Cotton or cotton mix fabrics, e.g. T-shirts, trousers.	
Note	For dark coloured fabrics use a detergent for coloured fabrics, or liquid detergent.	
Detergent	Universal detergent and detergent for coloured fabrics	
<b>Minimum iron 30°C to 60°C</b>   		Max. 3.0 kg / 3.5 kg
Fabric	Synthetic, mixed fibre and easy care cotton garments, e.g. shirts and blouses.	
Detergent	Universal detergent and detergent for coloured fabrics	
<b>Delicates 30°C to 60°C</b>  		Max. 2.0 kg / 2.5 kg
Fabric	For delicate synthetic, mixed fibre, rayon and easy care cotton garments.	
Detergent	Liquid detergent for delicates	
<b>Woollens</b>  <b>cold to 40°C</b>		Max. 2.0 kg / 2.5 kg
Fabric	Machine-washable or hand-washable wool or wool blend fabrics. If the care label does not specify a temperature, wash using the cold setting.	
Detergent	Liquid detergent for machine-washable woollens	
<b>Quick wash cold to 40°C</b>  		Max. 3.0 kg / 3.5 kg
Fabric	Very lightly soiled fabrics which can be washed in a <i>Cottons</i> programme.	
Detergent	Universal detergent and detergent for coloured fabrics	
<b>Silks</b>  <b>cold to 30°C</b>		Max. 2.0 kg / 2.5 kg
Fabric	Silks and other hand-washable fabrics with no wool content, e.g. satin, lace and silk.	
Note	Place socks, tights, bras etc. in a washing bag.	
Detergent	Liquid detergent for delicates	
<b>Shirts cold to 60°C</b>		Max. 2.0 kg / 2.5 kg
Fabric	Shirts and blouses	
Note	Pre-treat collars and cuffs if necessary. Wash silk garments in the <i>Silks</i> programme.	
Detergent	Universal detergent and detergent for coloured fabrics	
<b>Intensive wash 40°C to 60°C</b>		Max. 5.5 kg / 6.5 kg
Fabric	Heavily soiled cotton, linen and mixed fibre fabrics.	
Detergent	Universal detergent and detergent for coloured fabrics	
<b>Outer wear cold to 40°C</b>		Max. 2.5 kg / 3.0 kg
Fabric	Outerwear made from micro-fibre fabrics such as Gore-Tex <sup>®</sup> , Sympatex <sup>®</sup> , Windstopper <sup>®</sup> etc.	
Note	Zip up jackets before washing. Do not use fabric conditioner.	
Detergent	Liquid detergent for delicates	
<b>Proofing</b>		Max. 2.5 kg / 3.0 kg
Fabric	For treating microfibre fabrics, ski wear, fine closeweave cotton garments (poplin) or tablecloths with a water and dirt resistant finish.	
Proofing agents	Only use proofing agents which are stated by the manufacturer as being suitable for use on membrane textiles. <b>Do not use</b> proofing agents which contain paraffin. Add proofing agents to compartment  .	
<b>Towelling 40°C to 95°C</b>		max. 5.5 kg / 6.5 kg
Note	For dark coloured fabrics use a detergent for coloured fabrics.	
Detergent	Universal detergent	